

Better Science. Better Results.®



BAYER
ADVANCED

ONE APPLICATION SEASON LONG CONTROL.

PROVEN PERFORMANCE ON
COMPLETE LIST OF GRUBS.

ONLY NEED TO USE ONCE FOR
CONTROL ALL SEASON LONG.

EASY TO HANDLE GRANULAR
FORMULATION.

APPLY FROM BEGINING OF SUMMER
UNTIL MID-AUGUST.

ALSO PROVIDES SUPPRESSION OF
EUROPEAN CRANE FLY LARVAE.





**BAYER ADVANCED™
SEASON LONG GRUB
CONTROL INSECTICIDE has
been the trusted brand for
solving grub problems in
the Professional Lawn Care
industry for over a decade
and is now also available
for consumer use.**

Grubs can be one of the biggest threats to the health and beauty of your lawn. Grubs can damage your lawn by feeding on the roots of turfgrass plants. In fact by the time visible symptoms appear, irreversible damage may have already taken place.

Grub damage first appears as yellow areas in your lawn. These areas become larger with yellow patches turning to brown and eventually dying. To make matters worse, raccoons, skunks and other animals feed on grubs. These animals can cause as much or more damage to your lawn as the grubs themselves when they forage for grubs beneath the surface.

The best approach to controlling grubs is to stop them before they feed on your grass roots.

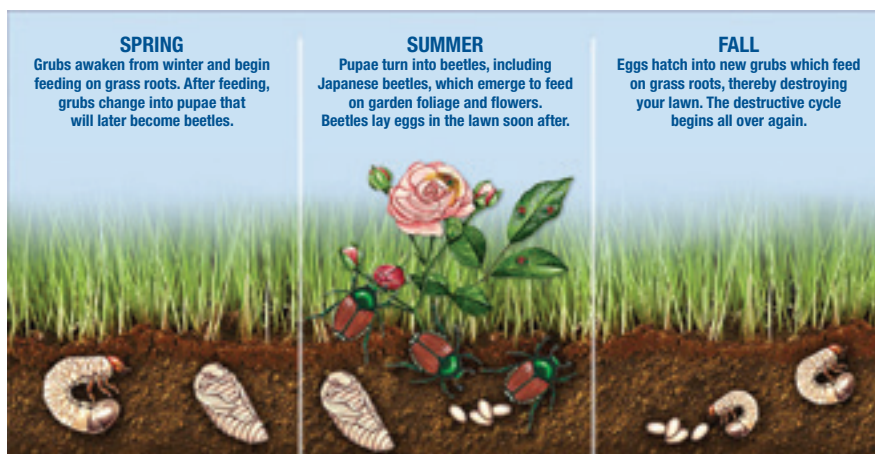
One application of BAYER ADVANCED™ SEASON LONG GRUB CONTROL INSECTICIDE applied early in the summer can protect your lawn from grubs – before they can cause extensive damage to your lawn.

How To Apply

- Apply BAYER ADVANCED™ SEASON LONG GRUB CONTROL INSECTICIDE only once per year as directed by this label.
- The need for an application can be based on monitoring of the site, previous records or experiences, current season adult trapping or other methods.
- Adjust spreader to deliver 11.2 g product/m² or 1.12kg/100m² (see spreader manufacturer spreader settings).
- To be sure you cover the entire area uniformly, first treat the border of the lawn then fill in the centre. Make parallel passes, walking at a steady pace to ensure even distribution of the granules.
- The granules must be watered immediately after application (within 1 hour) by sufficient irrigation (5-10 mm) to ensure the active ingredient moves through the thatch. Avoid overwatering (more than 20 mm). Avoid runoff or puddling of irrigation water following application.
- Avoid application of BAYER ADVANCED™ SEASON LONG GRUB CONTROL INSECTICIDE to turfgrass areas which are waterlogged or saturated, which will not allow penetration of the active ingredient into the plant zone and will decrease the effectiveness of the product.
- Ensure granules are removed from hard surfaces (for example, driveways).

For Best Results

- Do not mow until the granules are watered into the soil.
- Optimum results are typically seen when applied starting in the Summer Period or Mid-June, before larvae hatch.



How it Works

After BAYER ADVANCED™ SEASON LONG GRUB CONTROL INSECTICIDE is watered in, a protective zone is formed in the soil. If applied before larvae hatch, this product controls certain species of white grubs (larvae of European chafer beetle, Japanese beetle and Black Turfgrass Ataenius beetle). Also can suppress larvae of European Crane Fly larvae.

